

SDA

Software Data Analysis Tool

Specification

Overview

SDA Data Analysis Software is a convenient PC tool for analyzing data collected on RSX/VRX Video Recorders, VPR100 Programmer Recorders, DPR 180/250 Recorders, and CTX/UDC5300 Controllers. By viewing on a PC or by printing, you can display the collected data—stored on PCMCIA cards, floppy disks, or PC—in a variety of useful formats not available on your recorder or controller.

Functions

Use SDA to:

- View trends horizontally (Figure 1), vertically, dual trend, as a data table, or as an XY plot (Figure 2).
- View a setpoint profile's parameters
- Zoom in or out on a trend
- Interpolate. If data points were sampled at a slow rate, interpolation fills in gaps between points and smooths out a trend's otherwise jagged appearance.
- View trend statistical analysis: minimum, maximum, average, number of samples, standard deviation.
- View multiple trend files simultaneously. Allows melding of up to 12 traces over a maximum of 6 different files.
- View alarms, events, diagnostics, and trend points in tabular form (that is, data table). Shown for each data point are the date, time, value or state, and batch number. (Figure 3).
- Capture full screens or images to the Clipboard and export them to a file. This allows these images to be used for report generation and data presentation.
- Import saved files. Export data in either .DIF (Data Interchanged Format) or .CSV (Comma Separated Variable) format for use in applications such as a spreadsheet.
- Print data.
- Customize colors of data points, text, and screen background.
- Use Tools menu which includes Paintbrush and File Manager, plus user-defined tools.

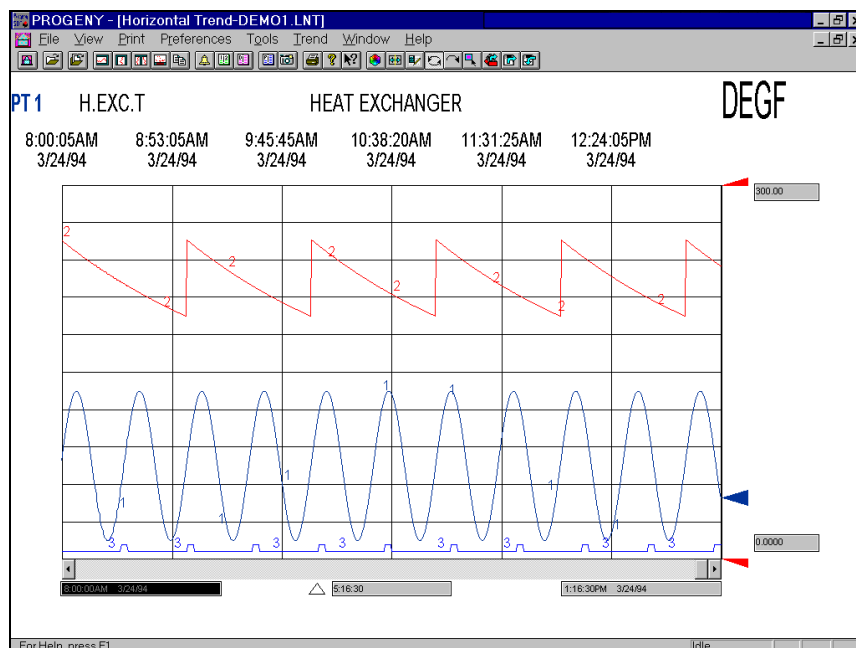


Figure 1 Horizontal Trend

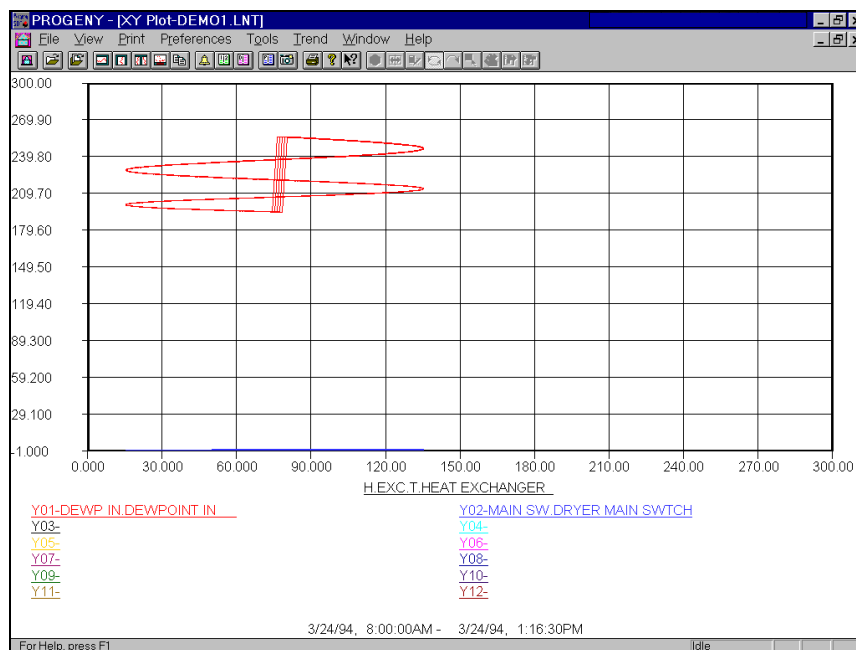


Figure 2 XY Plot

Features

- Familiar pulldown menu
- Toolbar—can be viewed by users who prefer working with icons
- Shortcut keys—for users who prefer performing actions with keystrokes
- Context-sensitive help—provides additional on-line information on the uses and features of SDA
- Demo—guides you through features
- Trend tool box—a set of tools for working with trends. Allows control and manipulation of Trend displays by selecting the following buttons.
 - ◊ Page forward/backward
 - ◊ Scroll forward/backward
 - ◊ Zoom in/out for range data
 - ◊ Rotate/freeze scoreboard
 - ◊ Go to next scoreboard
 - ◊ Detail view
 - ◊ Default view
- Preferences—lets you globally customize settings for trends, XY plots, data tables, alarms, events, diagnostics. Customizable features include startup screen, trend colors, and user-defined tools. Figure 4.
- 24 Megabyte data capacity

System Requirements

- 386 or higher
- Windows 3.1, Windows 95, Windows NT
- At least 4 Megabytes RAM
- 5 Megabytes storage
- Floppy disk drive or PCMCIA reader
- Windows-compatible graphics board
- MS-DOS 3.1 or higher
- Mouse or trackball
- Parallel port for printing

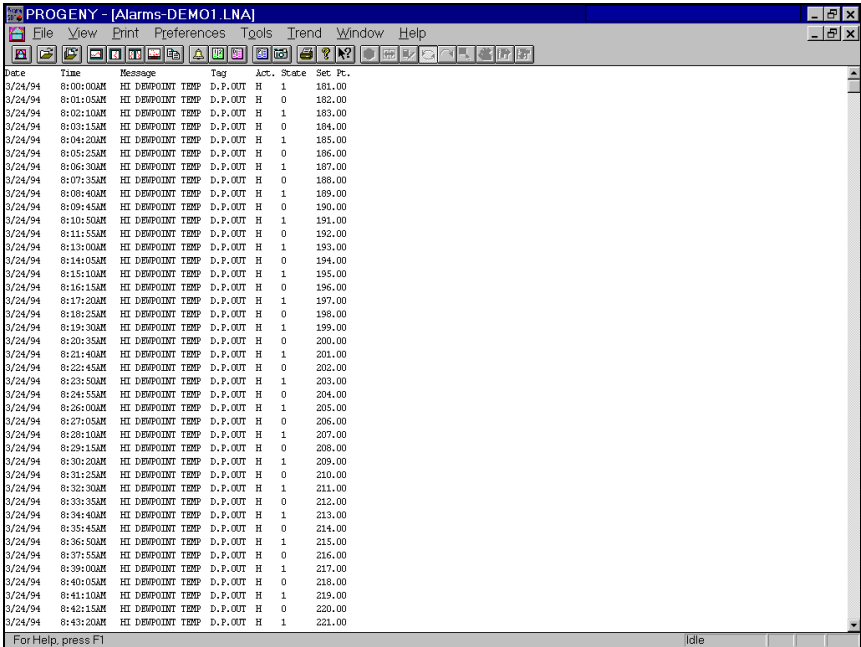


Figure 3 Data Table of Alarms

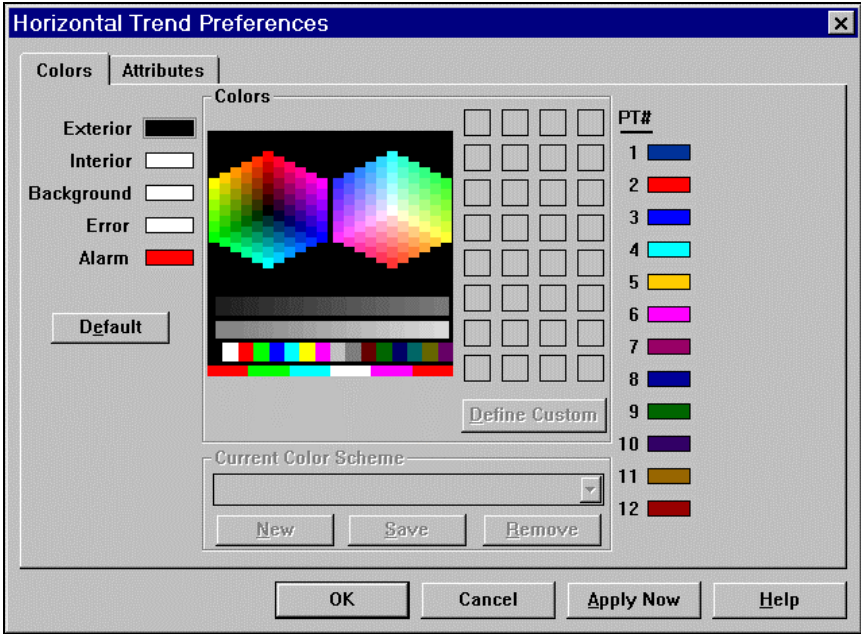


Figure 4 Trend Preferences

Distributor

Industrial Automation and Control

Honeywell Inc.

In the U.S.A.: Honeywell Industrial Automation and Control, 16404 North Black Canyon HWY., Phoenix, AZ 85023, (800) 343-0228
In Europe: Honeywell S.A., 80084 Amiens Cedex 2, (33) 22.54.56.56
Honeywell Control System Ltd., Honeywell House, Bracknell, UK-RG 12 1 EB, (44) 1344 826000
In Japan: Yamatake-Honeywell Co. Ltd., Nagai Int'l Bldg., 2 - 12 - 19 Shibuya-Ku, Tokyo 150 Japan, 81-3-3486-2051
In Asia: Honeywell Asia Pacific Inc., Room 3213-3225, Sun Hung kai Centre, No. 30 Harbor Road, Wanchai, Hong Kong, (852) 829-8298
In the Mediterranean: Africa and Middle East Region, Honeywell SpA, Via Vittor Pisani 13, 20124 Milano, Italy (39-2) 67731
Honeywell Pacific Division: Honeywell Pty Ltd., 5 Thomas Holt Drive, North Ryde Sydney, NSW Australia 2113, (61-2) 353 7000
In Canada: The Honeywell Centre, 155 Gordon Baker Road, Ontario M2H 3N7, 1-800-461-0013
In Latin America: Honeywell Inc., 14505 Commerce Way, Suite 500, Miami Lakes, Florida 33016-1556, (305) 364-2300